

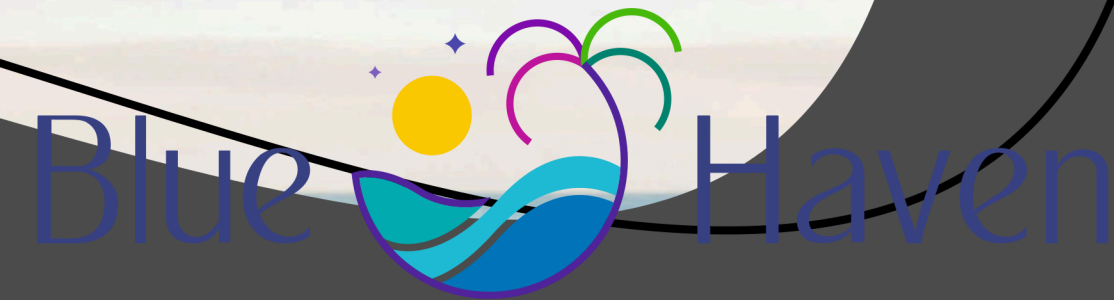


*ooh la la life*



*Elevate your Living*

Simba Developers Ltd. presents a beach-front residential township in a tranquil setting near Mikadi Beach. Enjoy breathtaking views of the endless horizon where the sky meets the serene ocean. This location offers not just homes, but also quick access to the sandy beach. It's the perfect place to live in Dar es Salaam, where you can experience the peace, privacy, and lifestyle you desire. Imagine a living experience with sparkling waves and a heartwarming beach, not as a resort, but as your home.



Mikadi Beach, Dar es Salaam

*ooh la la life*

*The sweet life starts  
with a tropical breeze.*



a project by  
**SIMBA**  
DEVELOPERS LTD  
— TANZANIA —  
AN **AFRICAB** GROUP COMPANY





Experience the elegance of this beautiful development,  
featuring exclusive beach access directly from the clubhouse.  
So now you need a well-planned daily life  
that inspires you to explore, work, and enjoy premium serenity.



# Blue Haven

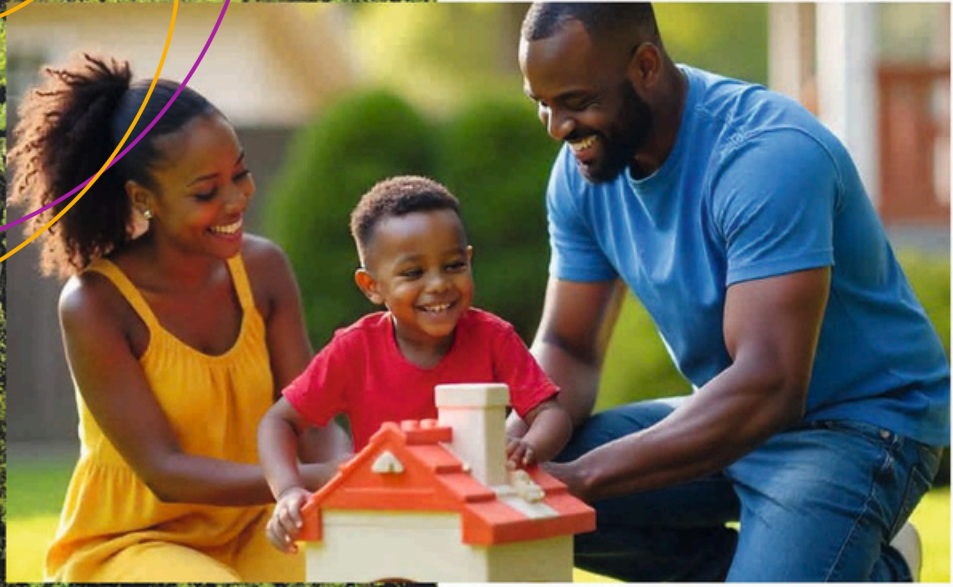
Mikadi Beach, Dar es Salaam

The pearl of Kigamboni is being made, Blue Haven township shall have an iconic presence near Mikadi Beach which is arguably one of Dar es Salaam most prestigious neighborhood. The residency shall be an abode for the elites of Dar. Mikadi Beach Front Township has 439 Residential Units within the complex having 16 Blocks of 5 Storeys offering:

3 BHK	288 units
2 BHK	62 units
1 BHK	25 units
Studio	64 units
Parking	453units
Shops	15units







## Higher Living

Live life king-size, with a proud sense of ownership. The experience of residing at Blue Haven offers a unique blend of relaxed, comfortable living, a sense of pride, and an elevated status from owning something so beautiful and complete.



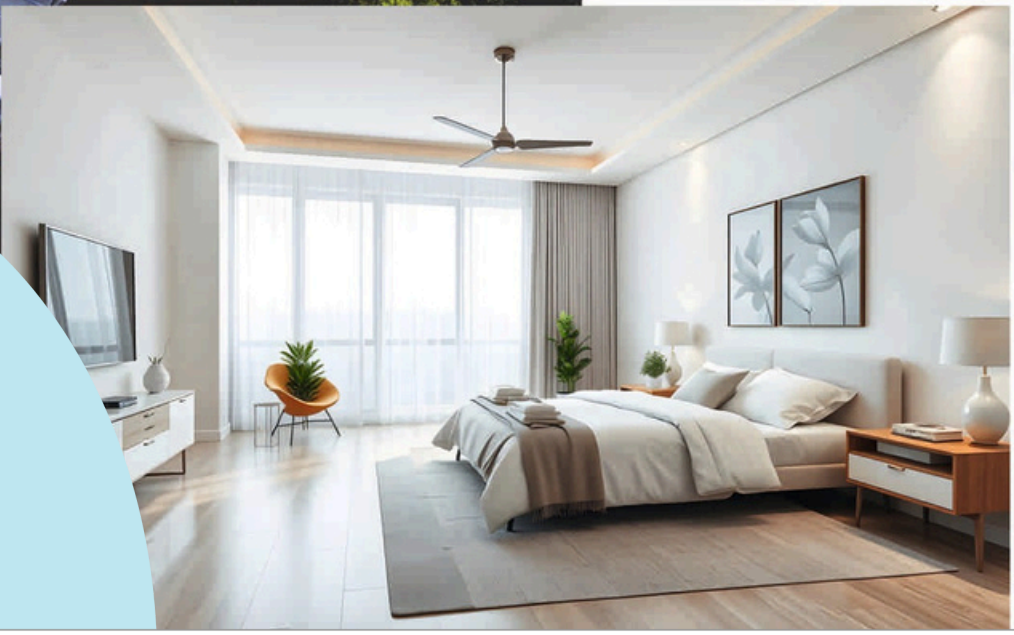




# Blue Haven

Mikadi Beach, Dar es Salaam

Each floor slab has been thoughtfully designed to provide a spacious layout with a nice viewing deck. The meticulous planning ensures ample natural light, cross ventilation from the sea breeze, and, most importantly, stunning ocean views.





# Living by the Ocean

## Luxurious Amenities

All residents will have exclusive access to their very own Beach-side Clubhouse, featuring premium amenities such as:

- SWIMMING POOL
- INDOOR GAMES
- YOGA ROOM
- KIDS PLAY AREA
- GYM





## Luxury Extended



- Grand Entrance
- Spacious Lobby Area
- Urban Green Open Space
- All building shall have 1-2 Lifts
- Security Main Gate
- CCTV Camera With Security
- Solar Panel Roof Top
- Multipurpose Function Hall
- Fire Safety Implemented
- Generator For Building
- Community Seating Area
- Small water ponds for serenity
- Shops at the Entrance
- Ample planned parking space
- Staff Facilities
- Society Office
- Centralized Gas Supply
- 24 X 7 Water Supply with ample Water Storage



# Master Plan

## TYPE -A-8 BLOCK

3BHK - A,B,C,D - APARTMENTS - 132 SQM  
STUDIO - S - APARTMENTS - 36 SQM

## TYPE -A\*- 1 BLOCK

3BHK - A,B - APARTMENTS - 132 SQM  
STUDIO - S - APARTMENTS - 36 SQM

## TYPE -B- 5 BLOCKS

3BHK - A,B,C,D - APARTMENTS - 132 SQM  
2BHK - E,F - APARTMENTS - 110 SQM  
STUDIO - S - APARTMENTS - 36 SQM

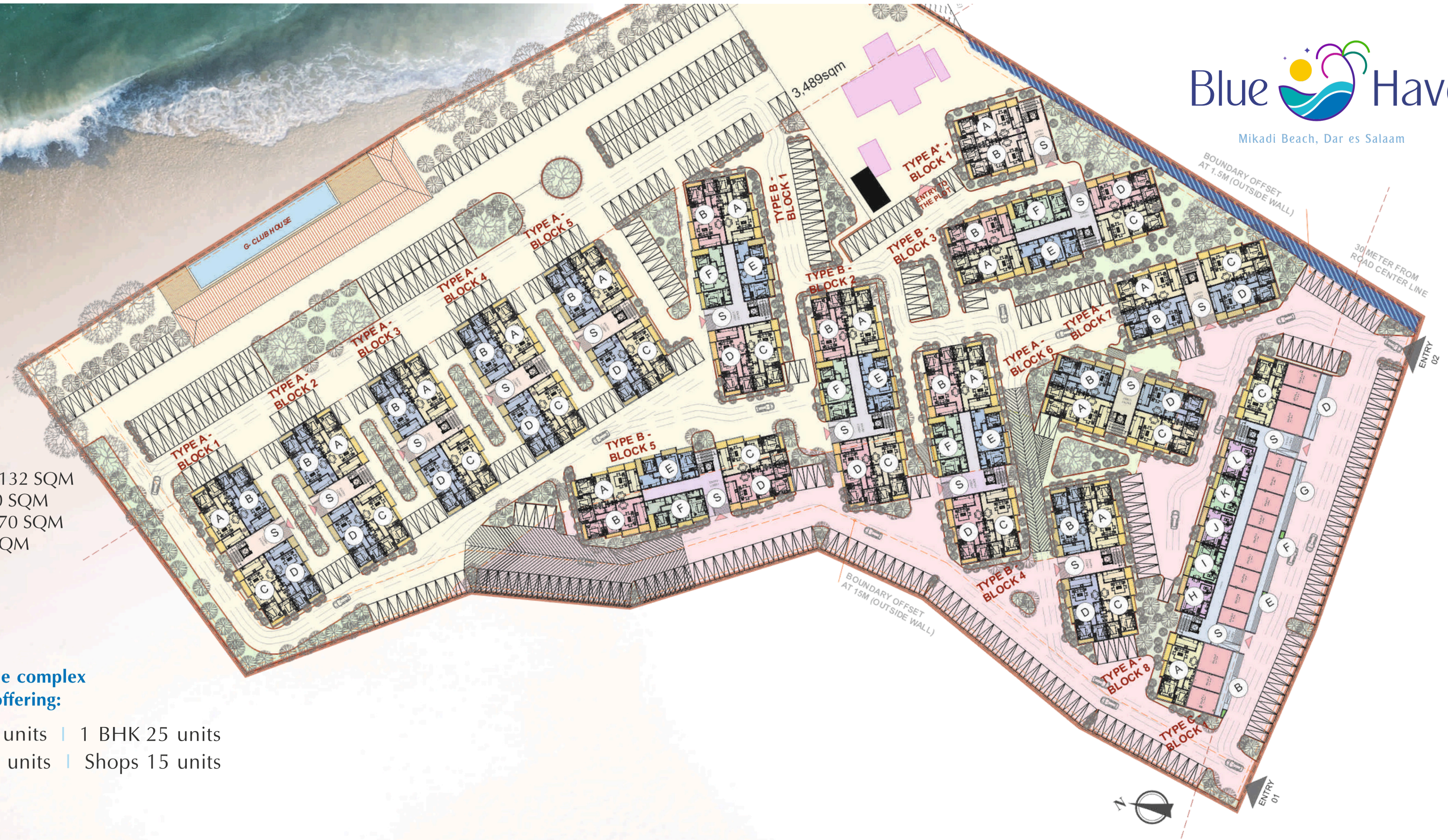
## TYPE -C- 1 BLOCKS

3BHK - A,B,C,D - APARTMENTS - 132 SQM  
2BHK - E,F,G - APARTMENTS - 110 SQM  
1BHK - H,I,J,K,L - APARTMENTS - 70 SQM  
STUDIO - S - APARTMENTS - 36 SQM  
SHOP - 1-15 UNITS 25-54 SQM

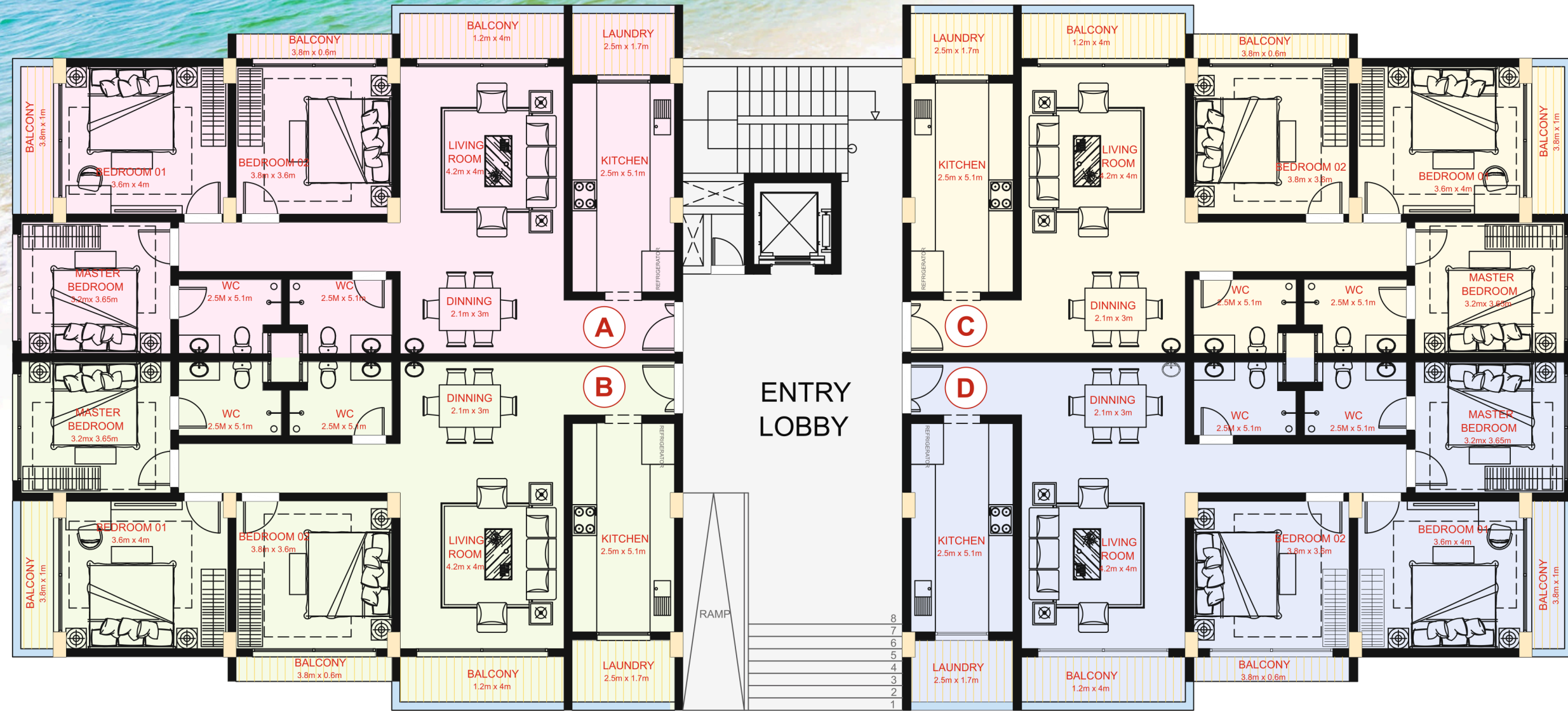
## CLUBHOUSE -G - 1 BLOCK

**Mikadi Beach Front Township has  
439 Residential Units within the complex  
having 16 Blocks of 5 Storeys offering:**

3 BHK 288 units | 2 BHK 62 units | 1 BHK 25 units  
Studio 64 units | Parking 453 units | Shops 15 units

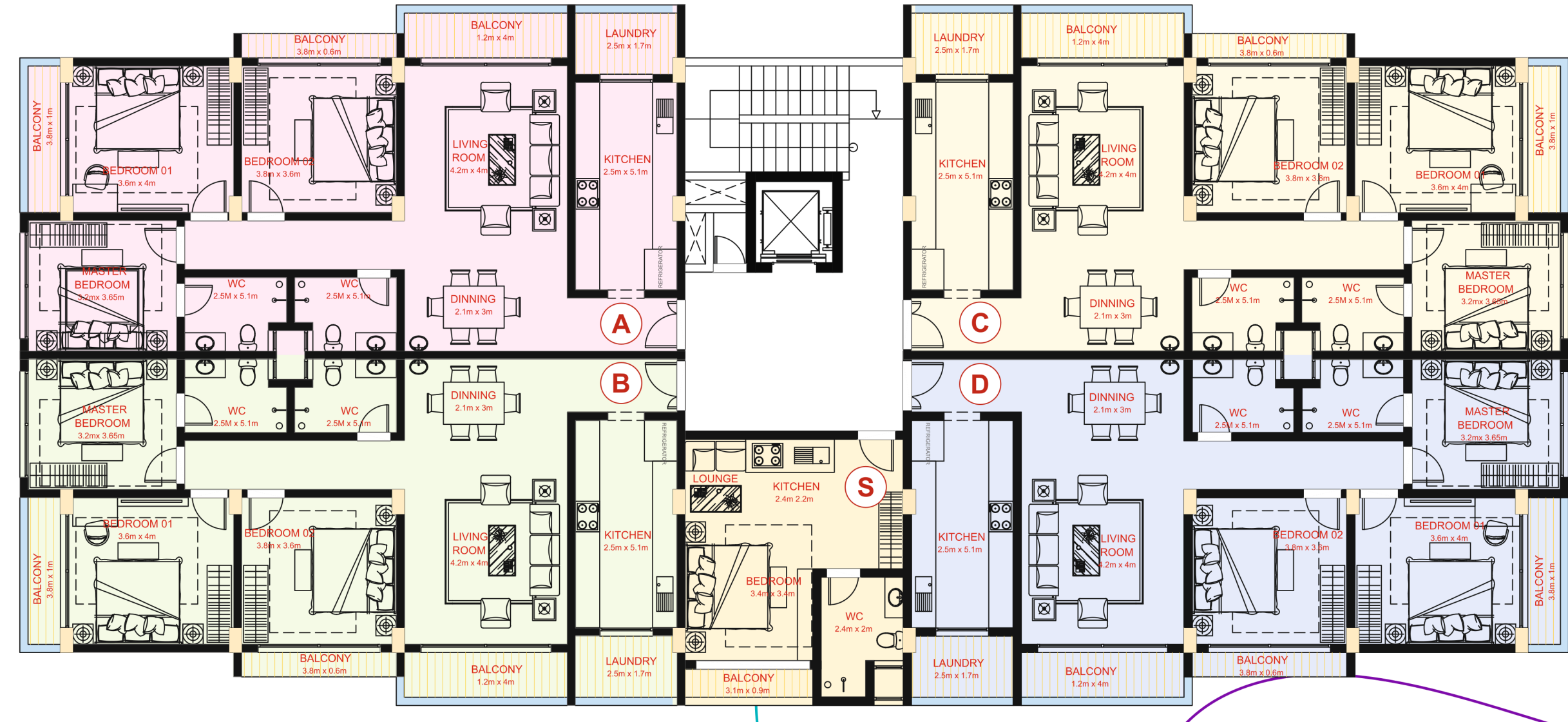






Typical Floor Plan

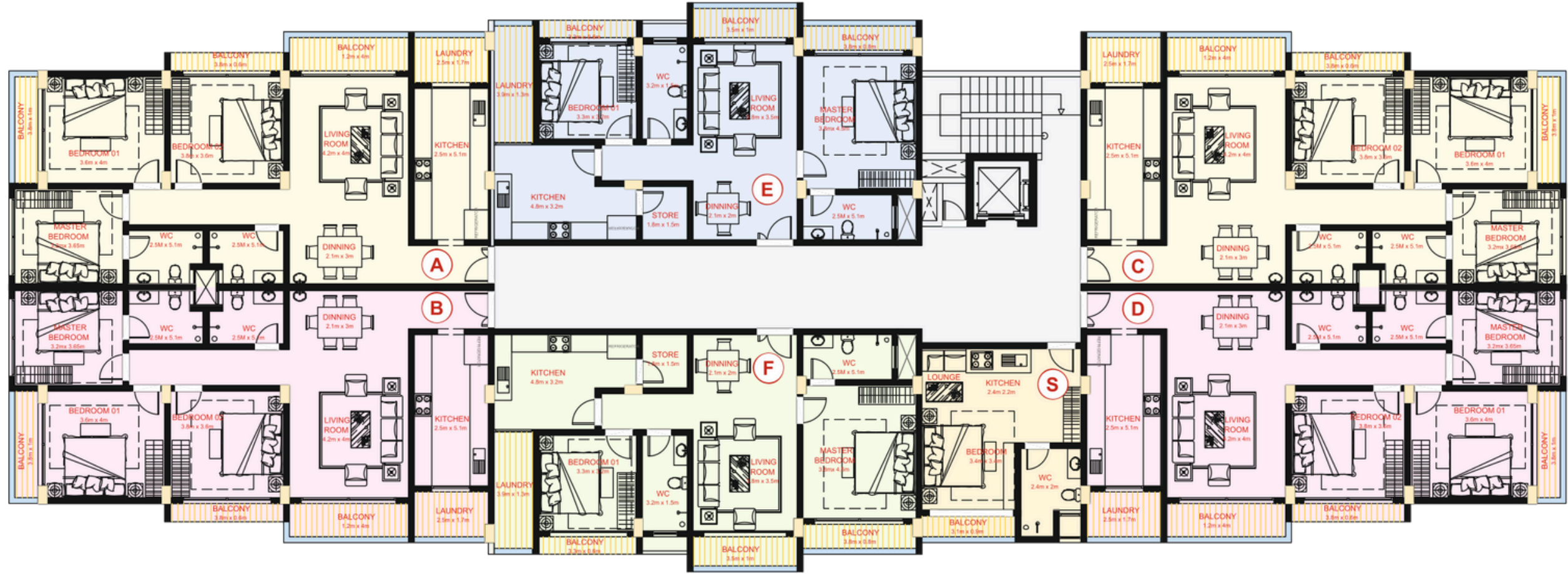
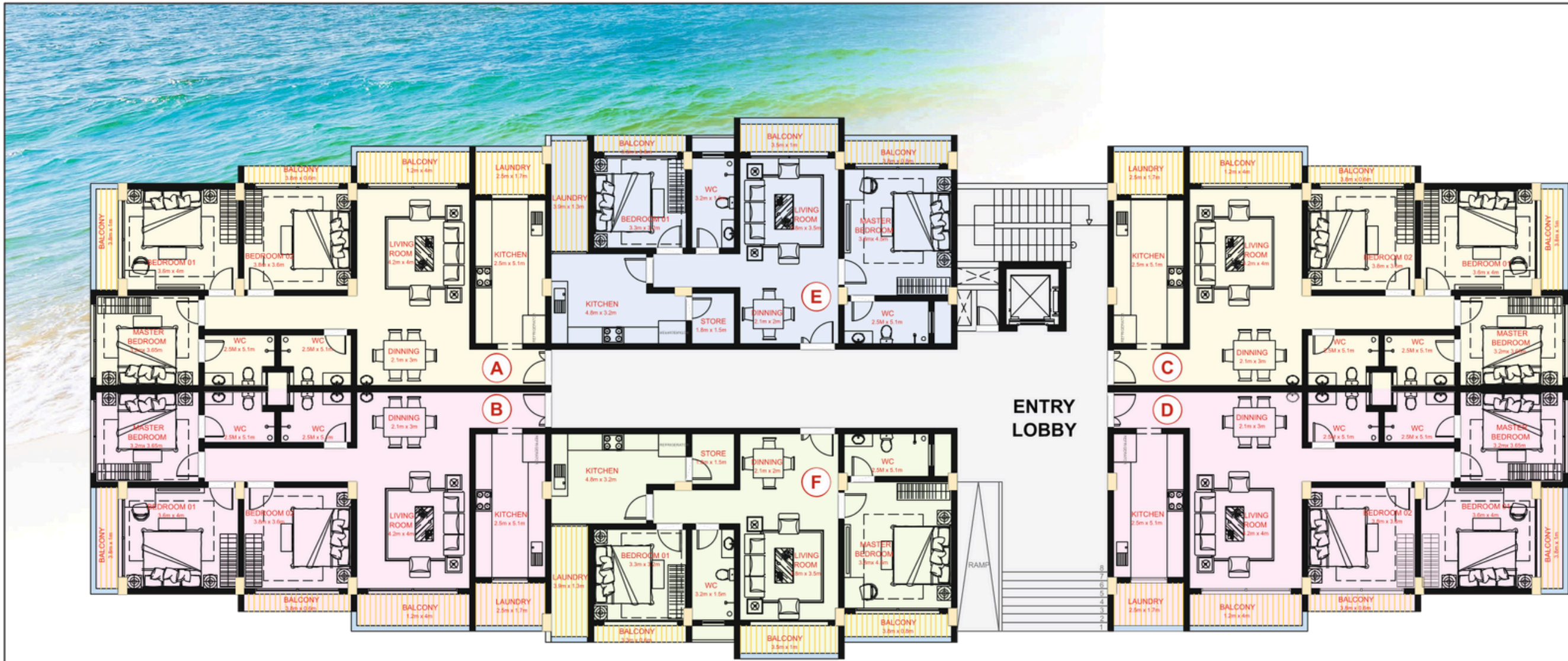
**TYPE -A-  
GROUND FLOOR**  
3BHK - A,B,C,D - APARTMENTS  
132 SQM



Typical Floor Plan

**TYPE -A-  
1ST - 4TH TYPICAL**  
3BHK - A,B,C,D - APARTMENTS - 132 SQM  
STUDIO - S - APARTMENT - 36 SQM





## Typical Floor Plan

### TYPE -B GROUND FLOOR

3BHK - A,B,C,D - APARTMENTS - 132 SQM  
2BHK - E,F - APARTMENTS - 110 SQM

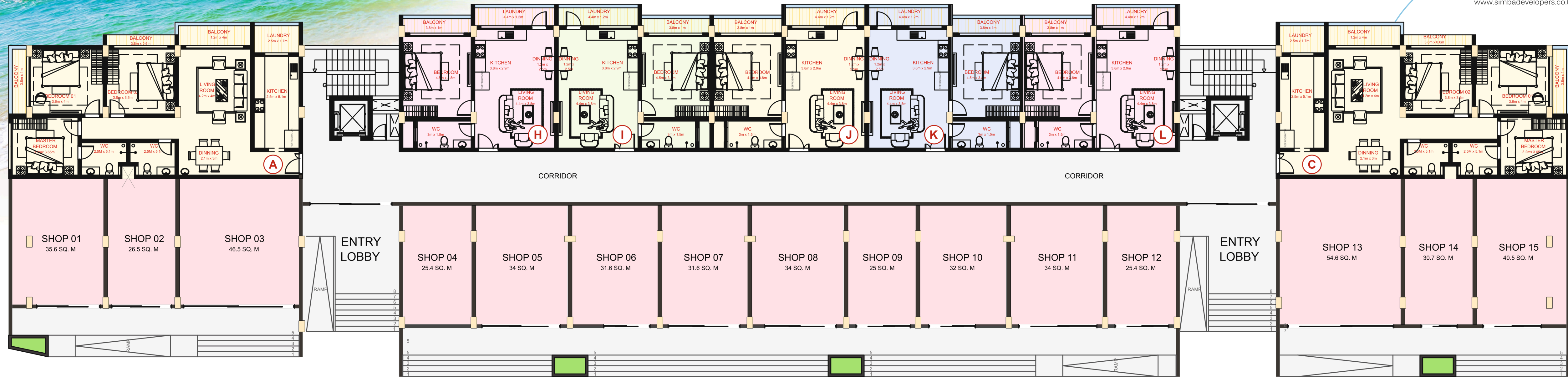


## Typical Floor Plan

### TYPE -B 1ST-4TH TYPICAL

3BHK - A,B,C,D - APARTMENTS - 132 SQM  
2BHK - E,F - APARTMENTS - 110 SQM  
STUDIO - S - APARTMENT - 36SQM



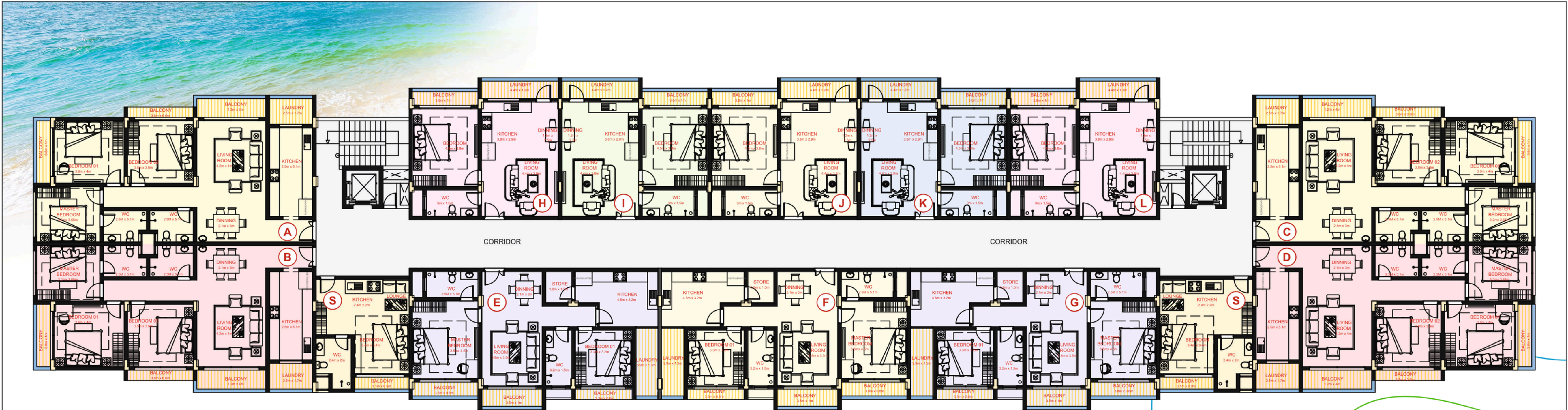


Typical Floor Plan

**TYPE -C-**  
**GROUND FLOOR**  
3BHK - A, C - APARTMENTS - 132 SQM  
1BHK - H, I, J, K, L - APARTMENTS - 70 SQM

SHOPS (15 UNITS) -  
VARIES SQM





Typical Floor Plan

**TYPE -C-  
1ST - 4TH TYPICAL**

3BHK - A,B,C,D - APARTMENTS - 132 SQM  
2BHK - E, F, G - APARTMENTS - 110 SQM

1BHK - H,I,J,K,L - APARTMENTS - 70 SQM  
STUDIO - S - APARTMENTS - 36 SQM



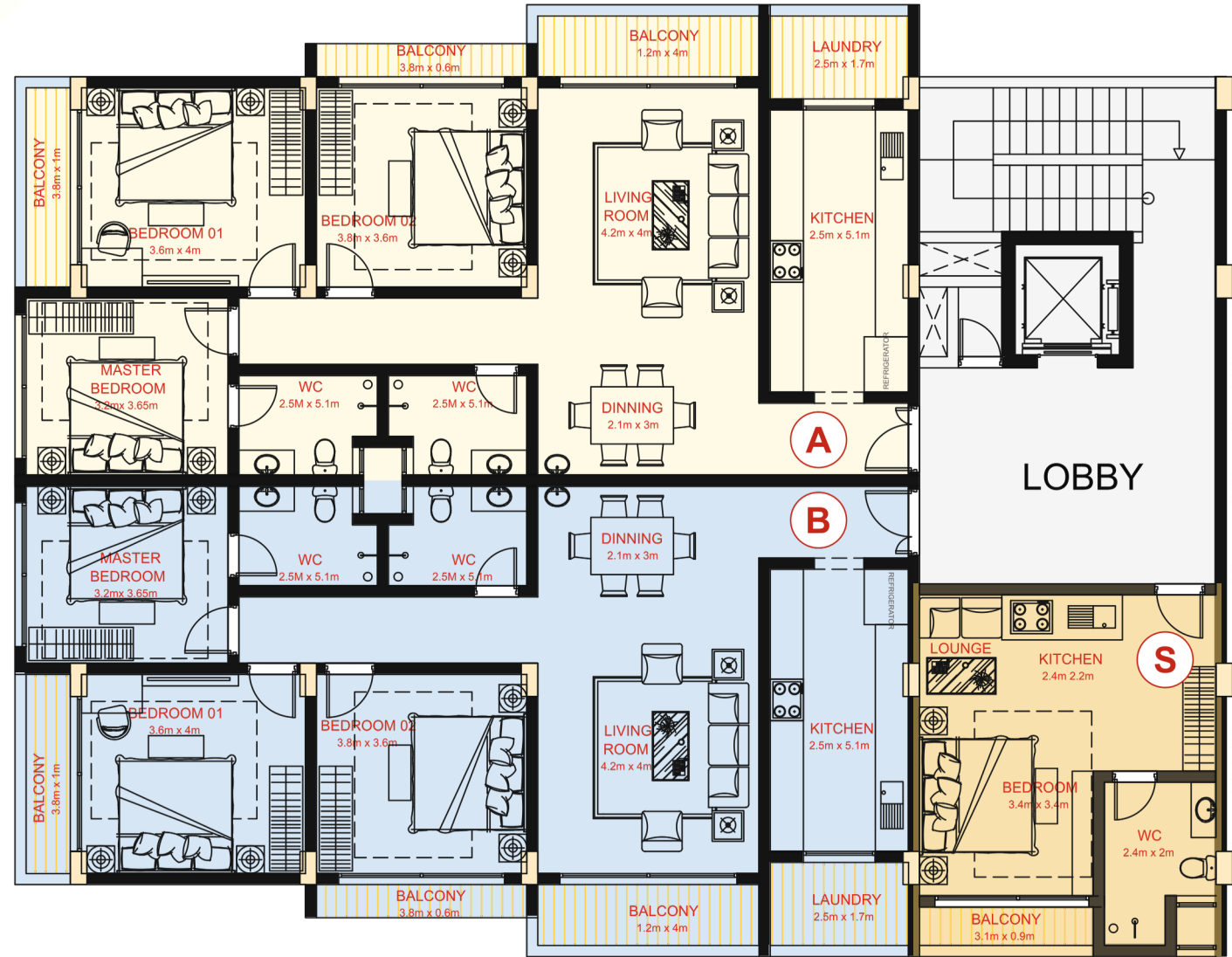
Mikadi Beach, Dar es Salaam





## Typical Floor Plan

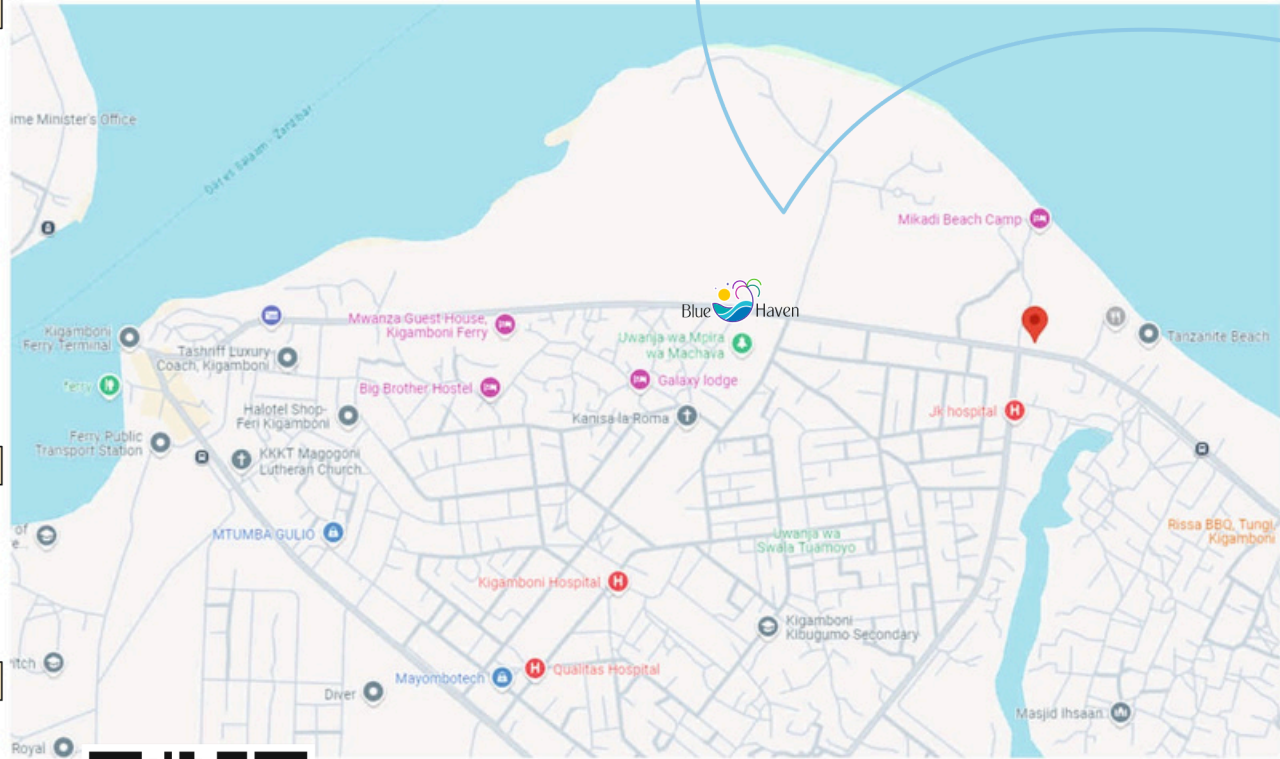
**TYPE -A\***  
**GROUND FLOOR**  
3BHK - A, B - APARTMENTS - 132 SQM



**TYPE -A\***  
**1ST - 4TH TYPICAL**  
3BHK - A, B - APARTMENTS - 132 SQM  
STUDIO - S - APARTMENT - 36SQM

## Knowing Mikadi Beach

Mikadi Beach, is near Kigamboni located in the heart of Dar es Salaam, only minutes from the Kigamboni Ferry .  
"Mikadi" is the Kiswahili word for the unque trees that line the beaches. The location is known for its premium neighbourhood, beautiful white sand beaches, and unforgettable sunrise views.



Scan QR Code for  
Location Map

Site Location:  
Mikadi Beach, Kigamboni,  
Dar es Salaam



**Blue Haven**  
Mikadi Beach, Dar es Salaam

## Location Advantage

The Location is super accessible to Super-Markets,  
Shopping Malls, Beaches, Tourist Spots

**HOSPITALS-**  
JK Hospital  
Kigamboni Hospital  
Qualitas Hospital

**SCHOOLS / COLLEGES-**  
Kigamboni Kibugumo Secondary School  
Paul Makonda Secondary School  
Kigamboni Navy Secondary School  
Tungi Primary School





# MAYAMAJAH.®

## ESTATE

DISCLAIMER: Perspectives shown in the Brochure are an artistic impression. The plans are subjected to changes/modifications/amendments (without notice) for better layout, as per suggestions of the Architects and/ or as per requirement of the Tanzanian Council and/or all other concerned authorities. All the amenities, facilities, etc., are subject to the approval of the concerned authorities and subject to changes if required. Some renderings and maps are artist's impressions and not actual depictions of the buildings or landscaping. A developer does not warrant or assume any legal liability or responsibility for the accuracy or completeness of any information disclosed. Also Note: The Room Layout, Plans, Photos shown with Furniture, and other electronic gadgets are for representation only for an easier visualization of the layout.